

# Patty's Pinot Closet Newsletter

Volume 2, Issue 6  
October, 2004  
Circulation 8105 Wineries,  
Retailers, and Wine Lovers



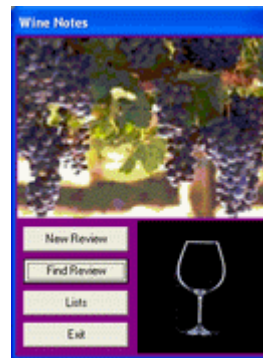
Sonoma County, CA  
[pat@pinotnoirs.com](mailto:pat@pinotnoirs.com)  
[www.pinotnoirs.com](http://www.pinotnoirs.com)

Patty's Pinot Closet publishes this newsletter on the enjoyment and appreciation of Pinot Noir. We welcome you to enjoy the newsletters and to share them with others. This, my tenth newsletter, covers Sonoma County Pinot Noirs from California and a few Mendocino wines because this year I didn't get to review their wines. I tasted Pinot Noirs at wineries, wine festivals, and during very lovely dinners and lunches.

If you cannot see the links or images in this email, [Click Here](#) or cut and paste this URL into your browser's address field:  
<http://www.pinotnoirs.com/>

## Announcing "Wine Notes" Software for Wine Evaluation

Wine Notes allows a user to evaluate wines using the 100-point scale. Easy to use with point and click operation. You can always have it with you because it runs on a Pocket PC. Available in December 2004, at the low cost of \$60.00, through Patty's Pinot Closet website.



Wine Review	
Varietal:	Pinot Noir
Winery:	Alta Rang
AVA:	Mainborough
Vineyard:	
Notes:	
Vintage:	2000
Reserve:	<input type="checkbox"/>
Price:	43
Cur:	USD
Area:	NZ
Date:	2/1/04
Visual	16
Nose	22
Taste	24
Alcohol	12
Typicalness	9
Gen. Quality	12
My Total:	95
Total:	95
Save	New
Close	

## Sonoma Food Wine and Accommodations

Sonoma County - home of America's most prolific writer on gastronomy, the late M. F. K. Fisher. W. H. Auden praised her as "the best prose writer in America" and I highly recommend her books. She lived in the Valley of the Moon which you drive through to get to the historic town of Sonoma, known for its beautiful mission, wonderful shops, galleries, and restaurants.

65 miles North of San Francisco on Hwy 101 you'll find Healdsburg. Here you'll be reminded of turn-of-the century America and the ambiance of a European countryside. The Spanish-style Plaza in the center of town contains many lovely shops and restaurants. Surrounding Healdsburg you'll find more than 60 wineries.

### Food

When I think of Sonoma County and food I think of three things – goat cheese, Oysters, and white peaches.



M. F. K. Fisher  
Photo By Annie Leibovitz

**Cheese.** Laura Chenel started the goat cheese craze in Sonoma County with a few goats back in 1979 after studying cheese making in France. She offered her cheese to Alice Waters at Chez Panisse restaurant. Alice immediately placed a standing order and Laura Chenel's Chèvre was launched. My favorite goat cheese comes from Humboldt County just North of Sonoma County where Mary Keehn established [Cypress Grove Chevre](#). Her Humbolt Fog has a central layer and outer covering of ash. It ripens with a soft white exterior mold. When cut, it is reminiscent of California's early morning coastal fog. Both Laura Chenel and Cypress Grove cheeses can be found at Whole Foods.



Cypress Grove's Humbolt Fog



Hog Island Oysters

**Oysters.** On the edge of Sonoma County you will find [The Hog Island Oyster Company](#) on Tomales Bay, a National Marine Sanctuary. The San Francisco Chronicle named the Hog Island Sweetwater the "Best American Oyster" in a blind taste test. They grow and sell over 3 million oysters a year. Visitors are welcome Wednesday through Sunday and you can bring a picnic and enjoy some oysters. I've been known to eat as many as 36 in one sitting. I especially love them with a vinaigrette they call "Hog Wash". The "Hog Wash" recipe is available on their website and you can order oysters there as well.

**Peaches.** The Madrona Manor in Healdsburg contains a quarter acre slope where Executive Chef Muir grows his specialty crop of herbs and vegetables. There's a peach orchard there with rare white Babcock peaches used in the restaurant. At Charlie Palmer's Dry Creek Kitchen we enjoyed a wonderful White Peach Ice Cream. In my favorite White Peach recipe you simply pour Pinot Noir over peeled and sliced white peaches, add a few sprigs of mint and enjoy.

**Community Supported Agriculture.** This summer my family and I have enjoyed participating in the Community Supported Agriculture (CSA) in our area. A concept started in the 1960s by homemakers in Japan. CSA came to America in 1985 at Indian Line Farm in Great Barrington, Massachusetts. Farmers (some growing on as little as one acre) sell shares in their farms to subscribers at the beginning of the growing season. Then, once a week, the "investors" receive fresh produce from the farm. This summer we've received spinach, lettuce, turnips, cabbage, cilantro, bok choy, beets, carrots, mustard greens, broccoli, cauliflower, winter & summer squash, orach, potatoes, pumpkins, tomatillo, strawberries, apples, tomatoes, chilies, onions, scallions, chard, rapini, cucumbers, and peppers. We've eaten many new vegetables and learned to love them. Get ready for next summer and find the CSA near you [by clicking here](#).

## Recipes

**Lamb Shanks Braised in Pinot Noir with Wild Huckleberry Sauce** Sonoma is also famous for their lamb. I've therefore chosen [Lamb Shanks Braised in Pinot Noir with Wild Huckleberry Sauce](#) for this issue's featured recipe. Wild huckleberries grow all over CA. In developing this recipe I picked huckleberries from Huckleberry Hill behind my house. If you don't have access to wild huckleberries you can order them on line at [Prima Gourmet](#) or substitute a close cousin - the blueberry.

**White Sonoma Peaches in Pinot Noir** Pour Pinot Noir over peeled and sliced white peaches, add a few sprigs of mint and enjoy.

Many recipes using Pinot Noir are available at Patty's Pinot Closet [Website](#).



Lamb Shanks Braised in Pinot Noir with Wild Huckleberry Sauce

## Restaurants

**Bistro Ralph** Fine bistro food located on the Plaza in Healdsburg, CA

**Screamin' Mimi's Ice Cream** Located in Sebastopol, CA this is a great place to get homemade ice cream and sorbets. [Website](#)

**the girl & the fig - Sonoma** On the plaza in the town of Sonoma, CA. [Website](#)

**Restaurant Charcuterie** On the Plaza in Healdsburg, CA.



Bistro Ralph

## Restaurants & Accommodations

**Applewood Inn & Restaurant** [Applewood Inn](#) contains both a fine restaurant and a cooking school, La Buona Forchetta.

**Charlie Palmer's Dry Creek Kitchen & the Hotel Healdsburg** On the Healdsburg Plaza [Charlie Palmer](#), one of America's leading chefs and owner of the highly acclaimed Aureole in New York City, has opened his Dry Creek Kitchen in the Hotel Healdsburg.

**Madrona Manor** Nestled in the hills above the Dry Creek Valley, this restaurant and lovely Victorian bed & breakfast contains eight acres of wooded and landscaped grounds. [Website](#)

**Vintner's Inn and John Ash & Company** Here you enjoy the clatter of the fountain, the taste of the region, the view of the vineyard, and the weight of a down duvet. [Website](#)

**Sea Ranch Lodge - Restaurant in the Lodge** The [Sea Ranch Lodge](#) sits perched high on a bluff top in Sonoma County.



Madrona Manor

**Rivers End** Nestled amidst the sounds of the waves crashing and the bark of seals in Jenner, CA. A mystical river ends, and a celebration of food, wine begins - with cabins also. [Website](#)

## Things To Do In Sonoma County



J Tasting Room

**J Vineyards and Winery** At J they believe that wine should be enjoyed with food - I agree. They offer their wines with a wonderful array of foods. A few of the foods they offer to go with their Pinot Noirs are Buffalo Chili and Crème Fraiche in House Made Tortillas, Five-Spice Barbeque Duck Dim Sum, and Smoked Duck Sausage with Herb Butter on Dijon Scone

**Ramekins Cooking School** Located in Sonoma, CA, Ramekins offers basic cooking skills of ethnic cuisine to famous chefs' menus where every home cook finds classes to meet their skill level and culinary interests.

# Wine & Food Art

This issue's featured artist is Jan Valtr of Pebble Beach, CA. "After the Harvest" watercolor. Jan was born in Prague, Czechoslovakia, received a BA from the California College of Arts & Crafts in 1960 and a MFA from San Francisco State University in 1966. Well known for his painting, Jan also teaches art in the Monterey Peninsula area. Jan's paintings are available through Patty's Pinot Closet [website](#).

I'm looking for artists whose work reflects the wine/vineyard environment to be represented on Patty's Pinot Closet Website. Please contact [Jud](#).



After the Harvest  
Watercolor 18 x 24  
\$425.00

## Sonoma Wine Festivals

**October 29 - 31 -- Pinot Festival "Pinot on the River"** "Pinot on the River" features guided tastings, in-depth seminars and tours of nearby vineyards in the prized Russian River Valley appellation – all punctuated by sumptuous food prepared by top wine country chefs. For more information please call or visit the [Website](#). Fee: \$625.00 per person Time: 6:30 PM Fri.; 10:00 AM Sat.; 1:00 PM Sun. Phone Number: 707-869-2706

**November 6 - 7 -- 2004 A Wine & Food Affair** Two days of wine and food pairings hosted by many of Sonoma County's premier wineries in the Alexander, Dry Creek and Russian River Valleys. Fee: Call for Info: 800-723-6336 Time: Call for Details Phone Number: 800-723-6336 -[Russian River Wine Road](#)

[Click Here](#) for a complete list of Pinot Wine Festivals.

## Sonoma County Pinot Noirs

Sonoma County is one of three great Pinot Noir growing areas in California. The others being the Santa Lucia Highlands of Monterey County and the Santa Rita Hills and Santa Maria Valley of Santa Barbara County.

In 2003 Sonoma County had 59,973 acres planted in grapes. Pinot Noir accounts for 10,113 of those acres. According to the Sonoma County Grape Growers Association each acre produces 15,940 glasses of wine at 6.4 oz each. That's at 5 tons an acre.

A new winery to watch in Sonoma is the WesMar Winery. Started in 2000 by Kirk Wesley Hubbard and wife, Denise Mary Selyem (daughter of Ed Selyem, formerly of Williams-Selyem). As you'd expect, their Pinot Noirs are great!



## Sonoma County Wine Regions:

In America we call our appellations American Viticulture Areas (AVAs). Sonoma County contains 13 AVAs. The AVAs of Rockpile, Dry Creek, Alexander Valley, Knights Valley, and Chalk Hill produce warmer growing varieties such as Zinfandel, Cabernet Sauvignon, and Syrah.

**Northern Sonoma AVA** The Northern Sonoma AVA consists of approximately 329,000 acres and contains the Alexander Valley, Chalk Hill, Dry Creek Valley, Knights Valley, Rockpile, and Russian River Valley.

The remaining AVAs of Bennett Valley, Carneros/Sonoma, Green Valley, Russian River, Sonoma Coast, Sonoma Mountain, and Sonoma Valley all produce the cooler growing grape varieties of Chardonnay, Pinot Noir and Merlot.

**Bennett Valley AVA** The consistent marine influence of Bennett Valley AVA creates ideal growing conditions for cool weather varieties, most notably Merlot, Syrah, Chardonnay and Pinot Noir.

**Carneros/Sonoma AVA** One of the coolest regions in Sonoma County - partly because of the San Pablo Bay's moderating influence - the Carneros produces prime Pinot Noir and Chardonnay. Here they use both varieties for crisp sparkling wines and table wines. Pinot Noirs often show a jammy strawberry character from the Carneros/Sonoma AVA.

**Green Valley AVA** Contained within the Russian River appellation, Green Valley Pinot Noirs are used for sparkling and still table wines. Pinot Noirs from this area are velvet-textured and supple with spicy black cherry.

**Russian River AVA** Here morning river fogs moderate afternoon temperatures resulting in wines of depth and suppleness. Pinot Noirs here often are black cherry and violets. Contains 125,000 acres with 10,000 acres in vineyards. More than 200 growers and 50 wineries reside in the Russian River Valley.

**Sonoma Coast AVA** The newest and coolest AVA in Sonoma County. Close to the Pacific Ocean, the Sonoma Coast receives more than twice the annual rainfall of the other AVAs in Sonoma County. The warmth of the region still ripens the wine grapes to their fullest flavor potential. Sonoma Coast Pinot Noirs are sulky and silken with black cherry fruit and sandalwood spice. Vineyards comprise only 7,000 acres of the total 517,000 acres in the Sonoma Coast AVA. Only 5 wineries reside here, but more than 50 growers are producing Pinot Noir grapes.

**Sonoma Mountain AVA** This AVA mostly grows early season varieties of Pinot Noir. This small area of only 6,000 acres has 800 acres in vineyards. Only 3 wineries reside here with more than 25 growers producing Pinot Noir grapes.

**Sonoma Valley AVA** The coolest areas of the Sonoma Valley AVA grow Chardonnay and Pinot Noir for both table and crisp sparkling wines.

Patty's Pinot Closet lists all the wines reviewed in current and past newsletters. We've included a price taken from the winery website or other retail sources if possible. They are included for relative comparison only, your price may be different.

Winery	Year	Price	Rank	Description
<a href="#">Davis Bynum</a> Sonoma, Russian River Valley, Lindleys' Vineyard	2001	50.00	94	Medium intensity, ruby-garnet color with aromas of black currant, blackberry and spice. Earthy velvety flavors of dark fruit.
<a href="#">Flowers</a> Sonoma Coast, Andreen-Gale	2001	48.00	93	Medium intensity, cherry color with smokey aromas of black cherry, violets, and Mushroom. Silky flavors of dark fruit and spice.
<a href="#">J Vineyards &amp; Winery</a> Sonoma, Russian River Valley, Robert Thomas Vineyard	2001	50.00	93	Medium intensity ruby-garnet color with earthy aromas of black cherries and violets. Well-balanced flavors of Velvety Black Cherry.
<a href="#">Merry Edwards Wines</a> Sonoma Coast, Meredith Estate	2001	30.00	93	Aromas of raspberry, cherry, and vanilla. Flavors of soft, smokey, raspberry and strawberry.
<a href="#">Siduri Wines</a> Sonoma Mountain, Van der Camp Vineyard	2001	34.00	93	Dense ruby-garnet color with toasty earthy blueberry aromas. Bursting with black fruit flavors and a long lingering aftertaste.
<a href="#">Siduri Wines</a> Sonoma Mountain, Van der Camp Vineyard	2002	42.00		I've yet to taste but thought you should know that the winery says it's better than 2001.
<a href="#">Wes Mar</a> Sonoma, Russian River Valley, Vine Hill Road	2001	29.00	93	Medium intensity, ruby-garnet color with aromas of raspberry, vanilla, spice, and orange blossom. Flavors of Cinnamon, Vanilla, and Cranberry. Lovely long aftertaste.
<a href="#">Bannister Wines</a> Sonoma, Russian River Valley, Salzgeber Vineyard	2001	34.00	92	Medium density ruby-garnet color with earthy aromas of black cherry and spice. Silky dark fruit feel in the mouth. Long aftertaste.
<a href="#">Byington Winery &amp; Vineyards</a> Sonoma Mountain, Van der Camp Vineyard	2002	30.00	92	Med Intensity, Ruby color, aromas of cherry, forest floor, spice, taste: earthy, black pepper blackberry
<a href="#">Chasseur</a> Sonoma, Sylvia's Vineyard	2001	36.00	92	Dense ruby-garnet color with earthy black currant and spicy aromas. Well-balanced big bodied wine with a long lovely aftertaste.
<a href="#">J Vineyards &amp; Winery</a> Sonoma, Russian River Valley, Estate, Nicole's Vineyard	1999	35.00	92	Aromas of earthy blueberries, violets and vanilla. Flavors of dark fruit, black pepper, and spice. Very well balanced with a long slightly smokey sweet finish.
<a href="#">Joseph Swan</a> Sonoma, Russian River Valley, Trenton Estate Vineyard	2001	45.00	92	Med Intensity, Ruby-Garnet color with earthy aromas of black cherry, spice and violets.
<a href="#">Kosta Browne</a> Sonoma, Russian River Valley, Cohn Vineyard	2002	48.00	92	Dense ruby-garnet color with aromas of black currant and black cherry. Flavors of black fruit, vanilla and supple tannins
<a href="#">Kosta Browne</a> Sonoma, Sonoma Coast, Kanzler Vineyard	2002	48.00	92	Dense ruby-garnet color with aromas of blueberry, blackberry, black cherry and vanilla. Complex flavors of dark fruit with supple tannins.
<a href="#">Lookout Ridge</a> Sonoma, Sonoma Coast, Keefer Ranch	2001	45.00	92	Dense Black Cherry color with complex black cherry and spice nose and earthy dark fruit and smoke in the taste.
<a href="#">Merry Edwards Wines</a> Sonoma Coast	2001	18.00	92	Aromas of cherries, raspberries and vanilla. Red fruit in the mouth with a smooth finish.

<a href="#">Skewis</a> Sonoma, Russian River Valley, Montgomery Vineyard	2001	45.00	92	Medium density bright ruby colored wine. Earthy aromas of cherry and vanilla. Flavors of dark fruit and spice.
<a href="#">Sunce</a> Sonoma, Russian River Valley, Piner Ranch Vineyard	2002	34.00	92	Medium intensity ruby-garnet color with chocolate and strawberry aromas. Toasty oak, cherry, licorice, and tobacco flavors
<a href="#">Ancien Wines</a> Sonoma Mountain, Steiner Vineyard	2000	22.00	91	Medium-bodied ruby-garnet color with earthy aromas of cassis and chocolate. Well-balanced, medium bodied with good tannin.
<a href="#">Ancien Wines</a> Sonoma, Russian River Valley	2001	33.00	91	Medium ruby-garnet color with aromas of smokey black cherry and spice. Well-balanced medium-bodied wine with luscious black fruit flavors. Long aftertaste.
<a href="#">Chateau St. Jean</a> Sonoma County	2002	19.00	91	Dense wine with aromas of black cherry, spice and smoke. Flavors of smokey dark black fruit with velvety tannins. A luscious, long finish.
<a href="#">Copeland Creek</a> Sonoma Coast	2001	30.00	91	Aromas of earthy black cherry, raspberry and spice. Velvety, smokey, dark fruit flavors with a long finish.
<a href="#">Davis Bynum</a> Sonoma, Russian River Valley, Allen Vineyard	2001	50.00	91	Medium intensity, ruby-garnet color with aromas of gamey, earthy black raspberry aromas. Flavors of black raspberry and spice with a medium body and long lingering finish.
<a href="#">De Loach Vineyards</a> Sonoma, Russian River Valley, Our Finest Selection OFS	2000	30.00	91	Medium intensity, ruby-garnet color with smokey, earthy black cherry aromas. Flavors of black cherry and spice with a medium body and long lingering finish.
<a href="#">Freeman Vineyard &amp; Winery</a> Sonoma, Akiko's Cuvee	2002	45.00	91	Aromas and flavors of earthy black cherry and toasty oak. Big in the mouth with a long finish.
<a href="#">Iron Horse Vineyard</a> Sonoma, Green Valley, Thomas Road Vineyard	2001	60.00	91	Medium density ruby-garnet color with aromas of black cherry and mushrooms. Flavors of toasty oak, ripe fruit and spice.
<a href="#">Kosta Browne</a> Sonoma, Russian River Valley	2002	34.00	91	Dense ruby-garnet color with aromas of black cherry, plum, raspberry, vanilla and spice. Flavors of black fruit with hints of smoke.
<a href="#">Marimar Torres Estate</a> Sonoma, Russian River Valley, Don Miguel Vineyard	2001	35.00	91	Aromas of black cherry, oak, and spice. Soft velvety black fruit flavors with firm tannins.
<a href="#">Merry Edwards Wines</a> Sonoma, Russian River Valley, Olivet Lane Vineyard	2001	32.00	91	Full bodied, dark ruby color with aromas of cherry, lavender and vanilla. Velvety in the mouth with a lovely long aftertaste.
<a href="#">Robert Stemmler</a> Sonoma, Carneros	2001	29.00	91	Medium intensity ruby-garnet with aromas of earthy black currant, violets, and mushroom. Black fruit and spice flavors with supple tannins. Long aftertaste.
<a href="#">Robert Stemmler</a> Sonoma, Carneros, Ferguson Block	2001	40.00	91	Aromas of blueberries, black cherries, chocolate and cedar. Flavors of dark fruit, licorice and black pepper accompanied by subtle tannins. Long aftertaste.
<a href="#">Russian Hill Winery</a> Sonoma, Russian River Valley, Estate, Tara Vineyard	2001		91	Deep black cherry color with aromas of smokey cherries. A velvety taste with a medium aftertaste.

<a href="#">Skewis</a> Mendocino, Anderson Valley, Floodgate Vineyard	2001	45.00	91	Dense ruby-garnet wine with aromas of black cherries, mushrooms, and violets. Velvety, complex flavors. Well-balanced.
<a href="#">Sunce</a> Sonoma Coast, Karah's Hillside Vineyard	2000	28.00	91	Dense, medium intensity, cherry color with earthy, mokey, strawberry and rose aromas. Velvety, dark fruit, licorice, and spice flavors.
<a href="#">Buena Vista Winery</a> Sonoma, Carneros Estate	2000	22.00	90	Dark bright ruby color with aromas of black cherry, raspberries and roses. Big flavors of red fruit and chocolate. Long aftertaste.
<a href="#">Ceja Vineyards</a> Sonoma, Carneros	2001	38.00	90	Medium density ruby color with aromas of black cherry, roses, and spice. Big bodied, fruity, and silky on the palate. Medium length finish.
<a href="#">Chasseur</a> Sonoma, Russian River Valley, Kent Ritchie Vineyard	2001	36.00	90	Medium ruby-garnet color with earthy black cherry aromas. Well-balanced black fruit flavors. Short finish.
Dehlinger Winery Sonoma, Russian River Valley Estate	2000	40.00	90	Bright ruby-garnet color with aromas of earthy raspberry, violets and spice. Velvety flavored red fruit with a long aftertaste.
<a href="#">Gundlach Bundschu Winery</a> Sonoma, Carneros, Rhinefarm Vineyard	2001	27.00	90	Aromas of cherries, cranberries and roses. Flavories of cherry, cranberry, and toffee. Long aftertaste.
<a href="#">Merry Edwards Wines</a> Sonoma, Russian River Valley	2001	22.00	90	Aromas of red raspberry and sage. Smooth and silky on the palate. A long finish.
<a href="#">Merry Edwards Wines</a> Sonoma, Russian River Valley, Klopp Ranch	2001	32.00	90	Dense wine with aromas of blueberry, blackberry and black cherry. This wine has big tannins and is one to age.
<a href="#">Robert Sinskey Vineyards</a> Sonoma, Los Carneros, Four Vineyards	2000	46.00	90	Dense ruby-garnet color with aromas of earthy cassis. Big and creamy in the mouth with a long lovely finish.
<a href="#">Robert Stemmler</a> Sonoma, Russian River Valley	2001	29.00	90	Aromas of blueberries, plum, roses, and lavender. Flavors of black fruit and velvety tannins. Long finish.
<a href="#">Scherrer Winery</a> Sonoma Coast, Hirsch Vineyard	2000	45.00	90	"Aromas of red and black fruits, rose hips and saffras. Well-balanced with great structure and long finish. Acidity, great structure, continuity and length."
<a href="#">Siduri Wines</a> Central Coast	2002	30.00	90	Dense ruby-garnet color with earthy blackberry aromas. Flavors of black fruit and a lovely long aftertaste.
<a href="#">Skewis</a> Sonoma, Russian River Valley, Bush Vineyard	2001	42.00	90	Dense ruby color with smokey aromas of cherries. Spice and cherry flavors.
<a href="#">Sunce</a> Sonoma, Russian River Valley, Rodella Vineyard	2002	34.00	90	Medium intensity ruby-garnet color with earthy Black Cherry, chocolate and spice flavors. Silky toasty flavor and long finish.
<a href="#">Bannister Wines</a> Mendocino, Anderson Valley	2000	22.00	89	Medium ruby-garnet color with aromas of cherry and spice. High acid with a medium mouth feel and a long aftertaste.
<a href="#">Blackstone Winery</a> Sonoma Coast Reserve	2002	29.00	89	Medium density ruby-garnet color with earthy aromas of cherries and spice. Flavor of red cherries on the palate.

<a href="#">De Loach Vineyards</a> Sonoma, Russian River Valley, Estate	2001	18.00	89	Light intensity, ruby-garnet with toasty cherry and rose aromas. Flavors of black fruit and spice with a medium finish.
<a href="#">Esterlina</a> Mendocino, Anderson Valley Estate	2000	30.00	89	Dense ruby-garnet color with aromas of black cherries and spice. Well-balanced with a velvety taste.
<a href="#">Freeman Vineyard &amp; Winery</a> Sonoma Coast	2002	35.00	89	Aromas and flavors of black cherry and toasty oak.
<a href="#">Fritz Winery</a> Sonoma, Russian River Valley	2001	25.00	89	Medium density ruby-garnet color with aromas of earthy strawberry, and spice. Silky flavors and a long aftertaste.
<a href="#">Gloria Ferrer Champagne Caves</a> Sonoma, Carneros, Rust Rock Terrace	2000	40.00	89	Light bodied, ruby-garnet color with an earthy raspberry nose.
<a href="#">J Vineyards &amp; Winery</a> Sonoma, Russian River Valley, Estate, Nicole's Vineyard	1998	35.00	89	Bright ruby color with aromas of cherry, raspberry and strawberry with hints of mushroom and mint. Earthy flavors of red fruit accompanied with vanilla and a long finish.
<a href="#">Joseph Swan</a> Sonoma, Russian River Valley	2001	20.00	89	Dense wine with earthy aromas of mushroom and black cherry
<a href="#">La Crema Winery</a> Sonoma, Sonoma Coast	2002	18.00	89	Bright ruby color with smoky cherries in the aroma. Velvety cherries and spice in the mouth with a short aftertaste.
<a href="#">Littorai</a> Sonoma Coast, Hirsch Vineyard	2001	50.00	89	Aromas of cherries, lavender, and roses. Cherries, raspberry, tea, in the mouth with a smooth long finish.
<a href="#">Longfellow</a> Sonoma, Los Carneros	2001	35.00	89	Smokey cherries, berries, and floral aromas. In the mouth cherries and toasty oak wit a medium finish.
<a href="#">Lost Canyon</a> Sonoma, Russian River Valley, Dutton Ranch, Morelli Lane Vineyard	2002	38.00	89	Ruby-garnet color with aromas of earthy cherries. Velvety cherry flavor with a short aftertaste.
<a href="#">Lynmar Winery</a> Sonoma, Quail Cuvee	2001	35.00	89	Light bodied, ruby-garnet color, with black raspberry aromas and raspberries and spice in the mouth. This wine tasted really good and would go well with food. Medium aftertaste.
<a href="#">Patz &amp; Hall</a> Sonoma Coast	2002	33.00	89	Aromas of cherries, raspberries and a hint of violets. Flavors of creamy red fruit and long aftertaste.
<a href="#">Patz &amp; Hall</a> Sonoma Coast, Burnside Vineyard	2002	45.00	89	Dense ruby color with aromas of plum and violets. Rich plumy taste with a very long lovely aftertaste.
<a href="#">Paul Hobbs</a> Sonoma, Russian River Valley	2002	45.00	89	Bright ruby color with aromas of black cherry, plum and fig. Flavors of cherry, licorice and supple tannins. Medium finish.
<a href="#">Robert Hunter Winery</a> Sonoma Valley	2001	18.00	89	Dense ruby-garnet color with aromas of black cherry and mint. Light in the mouth feel with a short finish.
<a href="#">Robert Sinskey Vineyards</a> Sonoma, Los Carneros	2000	30.00	89	Dense ruby-garnet color with aromas of black cherry and spice. Flavors of dark berries and a medium finish.
<a href="#">Sapphire Hill</a> Sonoma, Russian River Valley, Sapphire Hill Vineyard	2001	38.00	89	Full bodied, plum colored wine with a beautiful bouquet. Complex flavors of black cherry, tea, and wild berry.
<a href="#">Siduri Wines</a> Sonoma County	2002	25.00	89	Dense ruby-garnet color with earthy black cherry aromas. Flavors of black fruit with a medium finish.

<a href="#">Skewis</a> Sonoma, Russian River Valley, Salzgeber Vineyard	2001	40.00	89	Dense ruby-garnet wine with aromas of raspberry, vanilla and mushroom. Earthy flavors of red fruit and licorice. Lovely long finish.
<a href="#">Blackstone Winery</a> Sonoma Valley Reserve	2002	29.00	88	Medium intensity with strawberry aromas.
<a href="#">D'Argenzio Winery</a> Sonoma, Russian River Valley, Dutton Ranch	2001	29.50	88	Aromas of cherries, plums, vanilla and spice. Flavors of red fruit with a silky finish.
<a href="#">Flowers</a> Sonoma Coast	2002	42.00	88	Medium intensity, cherry color with earthy aromas of Black Cherry.
<a href="#">Gloria Ferrer Champagne Caves</a> Sonoma, Carneros	2001	26.00	88	Light bodied, ruby-garnet color with the Carneros nose. Velvety red fruit on the palate and a long aftertaste.
<a href="#">Joseph Swan</a> Sonoma, Russian River Valley, Saralee's Vineyard	2001	28.00	88	Lt Intensity, Ruby-Garnet color with earthy aromas of strawberries, cherries, and raspberries. Flavors of silky red fruit.
<a href="#">Littorai</a> Sonoma Coast, Thieriot Vineyard	2001	55.00	88	Strawberries, raspberries and mushrooms in the nose with red fruits in the mouth.
<a href="#">Skewis</a> Mendocino, Anderson Valley, Demuth Vineyard	2001	35.00	88	Medium density bright ruby color with aromas of cherries, cloves and orange blossom. Spice and red fruit flavors.
<a href="#">Sunce</a> Sonoma, Russian River Valley, Piner Ranch Vineyard	2001	32.00	88	Dense, medium intensity cherry color with smokey, strawberry aromas. Silky dark fruit and licorice flavors.
<a href="#">Frei Brothers</a> Sonoma, Russian River Valley	2002	18.00	87	Medium density ruby-garnet color. Very Burgundian nose with aromas of black cherry, rose petal, raspberry and vanilla. Silky, slightly acidic with red and black fruit flavors. Medium length aftertaste.
<a href="#">Grove Street Winery</a> Sonoma, Russian River Valley	2001	13.00	87	Medium density ruby-garnet color. Earthy aromas of black cherry and licorice. Silky, spicy, slightly oaky flavors.
<a href="#">Kenwood Vineyards</a> Sonoma, Russian River Valley	2002	16.99	87	Medium bodied, ruby-garnet color with cherry and spice aromas, red fruit on the palate and a medium aftertaste
<a href="#">Lost Canyon</a> Sonoma, Los Carneros, Las Brisas Vineyard	2002	38.00	87	Brilliant ruby-garnet medium intensity. Earthy aromas of sweet cherries. Earthy flavors of slightly acidic red fruit.
<a href="#">Lynmar Winery</a> Sonoma, Russian River Valley	2001	25.00	87	Light bodied, ruby-garnet color, with black raspberry and spice aromas and raspberry in the mouth. Short aftertaste.
<a href="#">Davis Bynum</a> Sonoma, Russian River Valley	2001	28.00	86	Medium intensity, ruby-cherry color with earthy aromas and flavors of cherry and spice.
<a href="#">Gallo Sonoma</a> Sonoma Coast Reserve	2002	13.00	86	medium intensity with ruby-garnet color. Light earthy aromas of cherry and raspberry. Flavors of red fruit, spice and a hint of oak.
<a href="#">J Vineyards &amp; Winery</a> Sonoma, Russian Rivery Valley	2001	26.00	86	Light intensity ruby-garnet color and aromas of cherries, spice and vanilla. Flavors of earthy red fruit and a nice finish.
<a href="#">Kenwood Vineyards</a> Sonoma, Russian River Valley	2001	18.00	85	Medium bodied with aromas of cherries and flowers.
<a href="#">Landmark Vineyards</a> Sonoma, Sonoma Mountain, Van der Kamp Vineyard	2001	30.00	85	Made from heirloom California clones Jackson, Martini, and Sobrievista. Wine is bright cherry with velvety taste and short aftertaste.

<a href="#">Martin Ray</a> Central Coast	2001	16.00	85	Light intensity, ruby-garnet color with aromas of raspberry and spice.
Rochioli Sonoma, Russian River Valley, Estate	2002	40.00	85	Overpowering gamey aroma.

**Subsequent Newsletters:** Our next newsletter covers Napa. Decembers newsletter covers all the other areas we haven't covered such as Mendocino, Chile, Argentina, South Africa, British Columbia, Germany, etc.

**Subscriptions:** Patty's Pinot Closet Newsletter is free via e-mail and can be viewed or downloaded from my web site. Mailed copies are available for:

US/Canada - \$24 per year

Other Countries - \$48 per year

To subscribe online [click here](#) and enter Pinot Closet Newsletter in the description block, or send Patty an [e-mail](#) to make other arrangements.

**Patty's Pinot Closet Web Site:** Contains information on Pinot Noir such as newsletters (current and previous), Pinot Noir culture, wine making, serving, regions and wineries, storing, wine events, restaurants with good wine lists, gifts, and wine glossary. To access Patty's Pinot Closet [Click Here](#).

**Patty's Pinot Closet Newsletter for Friends:** If you know anyone who would like to receive a copy of Patty's Pinot Closet, [Click Here](#) to send us an email.

**To Be Removed:** from our mailing list, [Click Here](#).